

CaBA Workshops

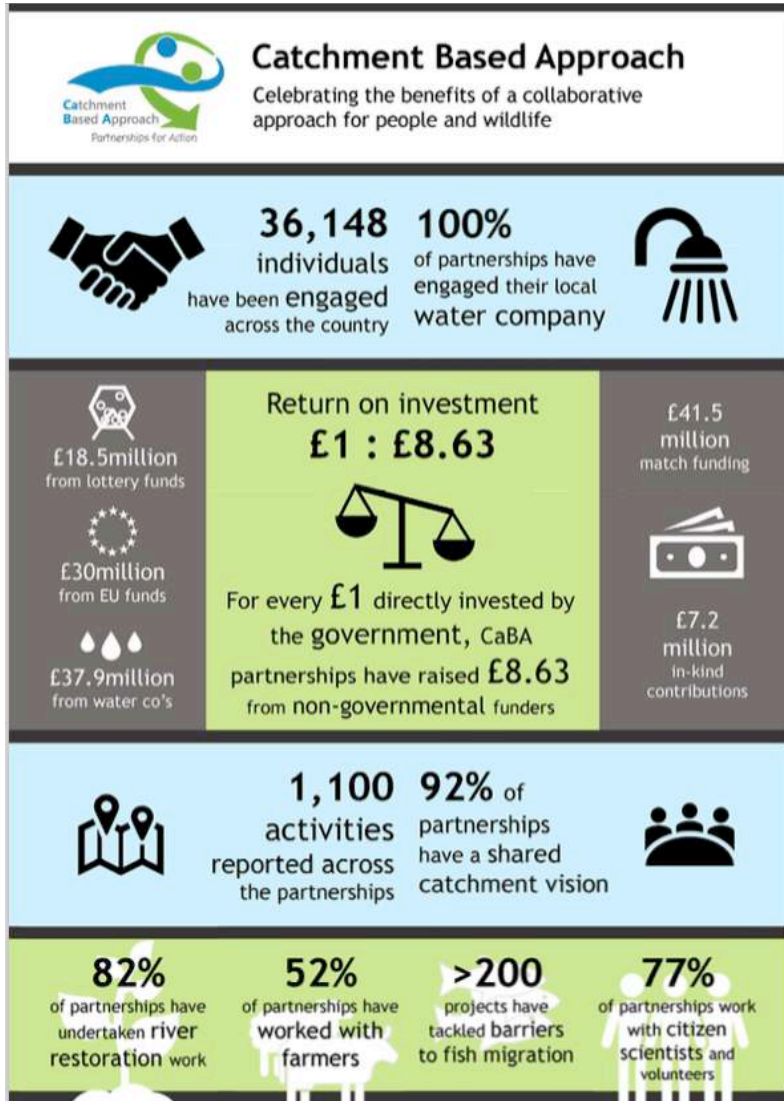
London, Solihull, Durham 2019



Workshop Rationale

- Fast changing world, number of initiatives with direct relevance to CaBA
- Two-way Communication
- The CaBA Benefits, Monitoring and Evaluation reporting process

The Catchment Based Approach



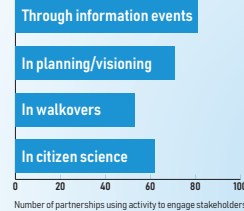
Catchment Based Approach

Celebrating the benefits of a collaborative approach for people and wildlife

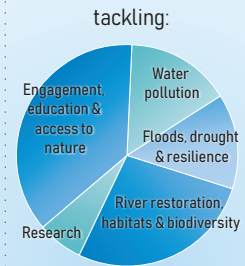


Action and Activities in 2017/18

27,846 primary stakeholders engaged in 2017/18



452 projects tackling:



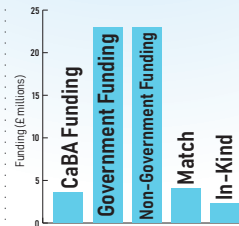
Project outcomes in 2017/18:

- 14,105** volunteers & citizen scientists actively involved
- 2,835 ha** habitat created
- 94 barriers** to fish migration mitigated
- 167** projects tackling diffuse pollution & improving water quality
- 209** projects tackling ecological quality of waterbodies
- >50km** riverbank controlled for invasive species
- 6,100** farmers engaged, with on-farm measures implemented

£1 : £6.50

For every £1 directly invested by the Government, CaBA partnerships have raised £6.50 from non-governmental funders plus

£23 million of wider government funding invested via a collaborative catchment approach



498 CaBA meetings across the country

All CPs work with their local water company and **63%** have the water company involved in funding and/or delivery

Funding.....?

- Government is somewhat preoccupied....
- Funding Review





HM Government

A Green Future: Our 25 Year Plan to Improve the Environment



25 Year Environment Plan: 'urban' relevant terminology (the hooks)

Support wetlands

Greening of our urban environments

Improve biodiversity

Work with nature to protect communities from flooding

Plant more trees

Clean and plentiful water

Promoting health and wellbeing through the natural environment

Creating more green infrastructure

Putting in place more sustainable drainage systems

A framework for the production of Drainage and Wastewater Management Plans

Commissioned by Water UK in collaboration with the Welsh Government, Ofwat, Environment Agency, Natural Resources Wales, Consumer Council for Water and Blueprint for Water

September 2018

The framework provides the basis for more collaborative and integrated planning with and alongside organisations that have responsibilities relating to drainage, flooding and protection of the environment. Whilst the companies have a direct regulatory focus in relation to providing evidence in support of their strategic business plans, it is important to recognise that the responsibility for developing the drainage and wastewater plan is shared between all stakeholders and collaborative engagement is essential.

