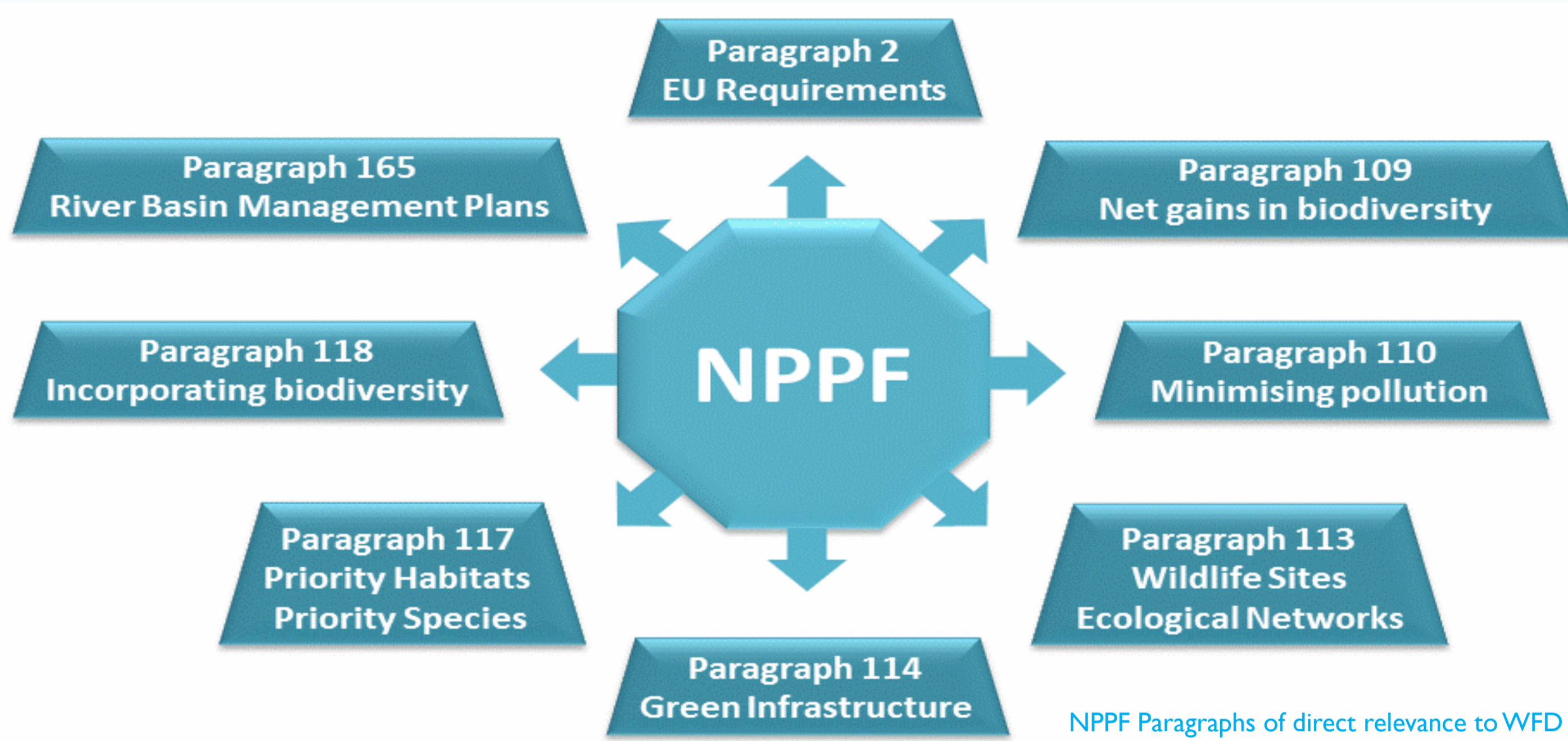


Engaging with Water Framework Directive

Local planning policies contribute to WFD objectives - through strategic planning & development management

The National Planning Policy Framework gives local planning authorities clear guidance on integrating biodiversity and ecological considerations into the planning process and developing a catchment based approach through regional River Basin Management Plans

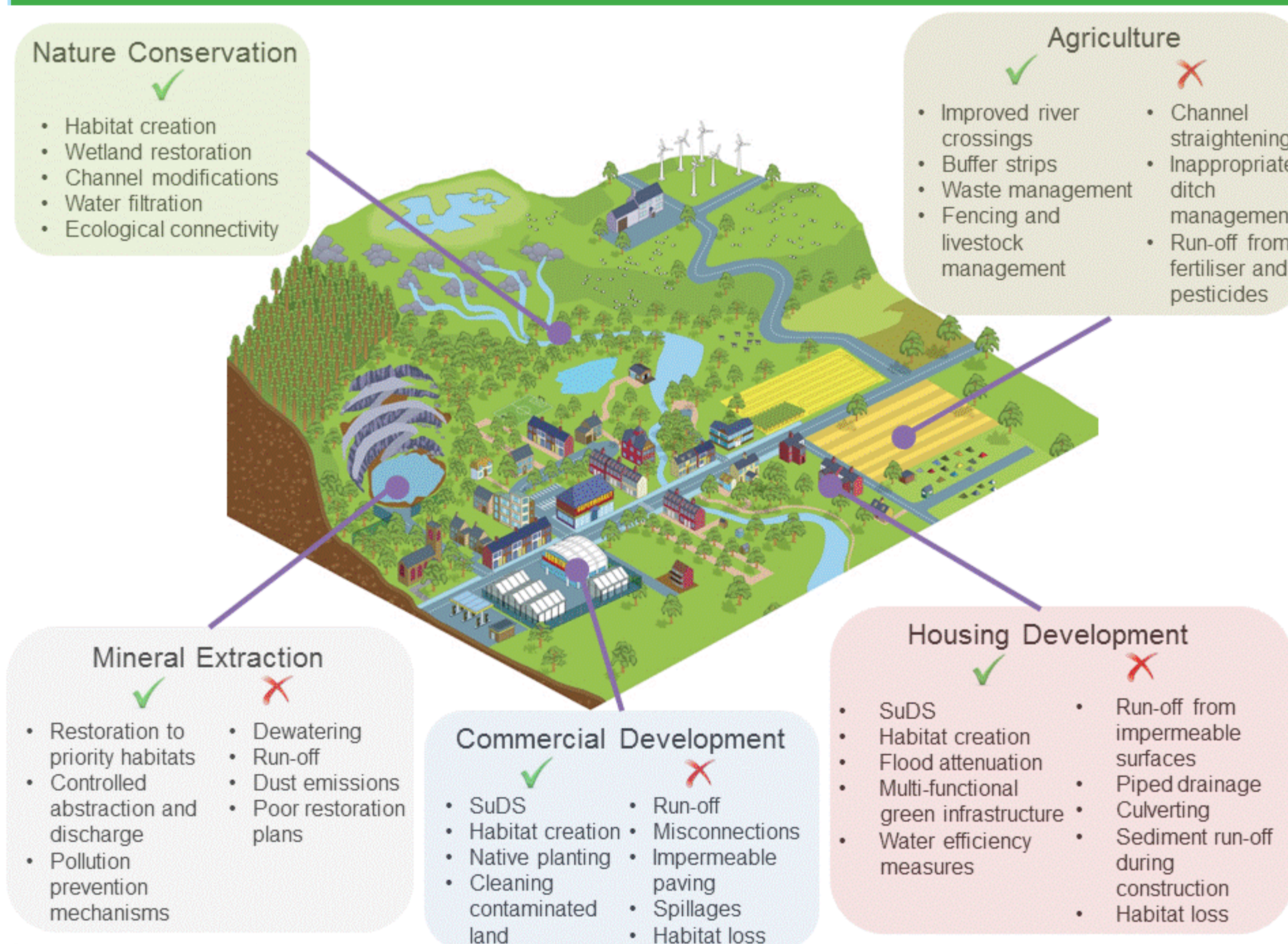


Through planning policies planning departments can change a concrete channel (above) into a more natural channel (below) where wildlife has a chance to survive



The Natural Environment and Rural Communities Act 2006 places a duty on planners and local authorities as it states that 'every public body must, in exercising its functions, have regard, so far as consistent with proper exercise of those functions, to the purpose of conserving biodiversity'.

Positive and negative effects of development on the water environment



Local planning policies can have a major influence on achieving WFD objectives through controlling the effects of development on the water environment. Planners can require that development proposals help conserve and enhance watercourse habitats

Base diagram reproduced with permission from Local Authority Services and the Water Environment Executive Summary (Environment Agency, June 2012)